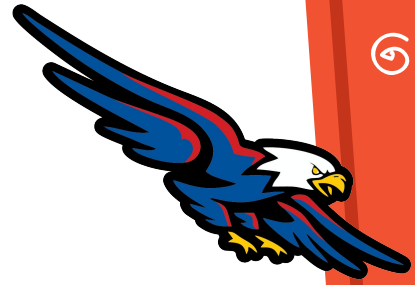


*Please mute your microphone  
to ensure the best experience  
for everyone. Thank you!*

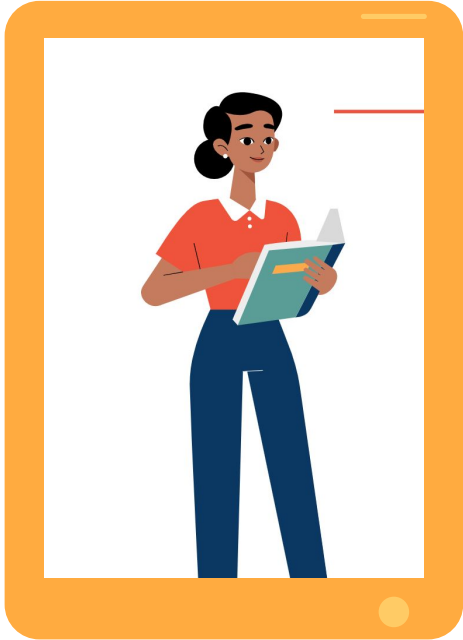
**Return to  
In-Person Learning  
at  
Lake Elkhorn  
Middle School**

**Groups A & B**

**March 18, 2021**



# Welcome Back



We are so **excited** for our students to be returning to our school building! As we are excited to see them, we want to take the time to make sure that they are **safe** and **healthy**.

The following presentation will allow you to develop a deeper understanding about the **safety procedures** in place to keep students, teachers, and the community safe.



# Agenda



- Welcome
- Quick Facts
- Preparing to Return to In-person School
- Daily Health Screening
- Daily Schedule & Routines
- Health Room Procedures
- Other Procedures
- General Safety Guidelines
- Questions



# Quick Facts

## Group A

Students attend Monday and Tuesday

## Group B

Students attend Thursday and Friday





# Quick Facts

## Return Dates:

6th Grade: Week of March 29

Group A: March 29

Group B: April 1

7th and 8th Grades: Week of April 12

Group A: April 12

Group B: April 15

**Preparing  
to Return  
to  
In-Person  
School**



# Materials To Bring In-Person

## 3-Ply Mask\*

- Bring an extra!
- **Neck Gaiters are not allowed**, unless over top a 3-ply mask.
- **Masks with vents are not allowed** unless over a 3-ply mask.
- Make sure your child's mask is **tight enough to stay over their nose**



## Recommended but not required:

- Face Shield\*
- Hand Sanitizer
- Sanitizing Wipes



*\*Students will receive a mask and a shield*

# Materials To Bring In-Person

All students should bring a backpack to school with the following materials:

- **Chromebook** (Fully Charged)
- **Charger**
- **Headphones**
- Pencil/Pen
- Paper/Notebook
- Other materials as directed by individual teachers



*Note: If your child does not have a Chromebook, please contact your child's grade-level administrator*



**Daily  
Health  
Screening &  
Notifying  
LEMS**



# Covid-19: Symptoms, Close Contact or Positive Results

If your child:

- **Tested positive** for the virus that causes COVID-19, or
- Has **symptoms** consistent with COVID-19, or
- Has **been in close contact** with someone with COVID-19 symptoms, including anyone who lives in your home

Please keep your child home from school and contact our school nurse, Ms. McWethy, and your child's grade level administrator.

# **Covid-19: Symptoms, Close Contact or Positive Results**

**Nurse: [teri\\_mcwethy@hcpss.org](mailto:teri_mcwethy@hcpss.org)**

**6th grade administrator: [nicholas\\_cometa@hcpss.org](mailto:nicholas_cometa@hcpss.org)**

**7th grade administrator: [jacqueline\\_sica@hcpss.org](mailto:jacqueline_sica@hcpss.org)**

**8th grade administrator: [kamille\\_guinn@hcpss.org](mailto:kamille_guinn@hcpss.org)**

# Health Screening



To ensure students are healthy enough to attend in-person instruction, parents/guardians are to **perform a symptom check every day before the student leaves home.**

A student having any of the symptoms on the following slide **should not be sent to school** and may continue to access their classrooms virtually.





# A student having any of these symptoms should **STAY HOME** and access classes virtually:

## 1 of the following:

- New onset cough, shortness of breath, or difficulty breathing
- New loss of taste or smell

OR

## 2 of the following:

- Fever over 100.4 or chills within the past 24 hours
- Fatigue
- Muscle or body aches
- Headache
- Sore throat
- Congestion or runny nose
- Chills or shaking chills
- Nausea or vomiting
- Diarrhea

Additionally, students who:

- Have been in close **contact with anyone who tested positive for COVID-19** or
- Is **suspected of having COVID-19**

SHOULD **STAY HOME**

# Health Screening



Parents/guardians will assess their children for symptoms of COVID-19 illness and **will not send them to school** until after they have been **symptom-free at least 10 days** after the onset of symptoms, and have **no fever for at least 24 hours** (without fever-reducing medication).



# Covid-like Illness During School Hours



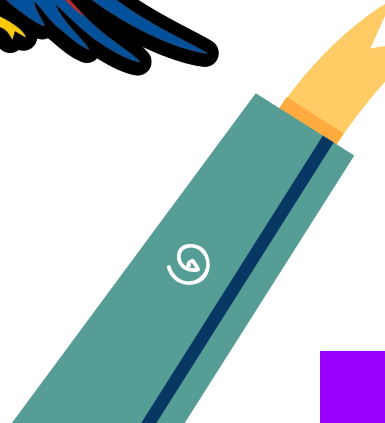
**During school hours, students with Covid-like illness:**

- Will be placed in the isolation area
- **MUST be picked up within 1 hour**, or sooner

*More details regarding the procedures for accessing the health room  
will be shared later in the presentation*



# Daily Schedule & Routines



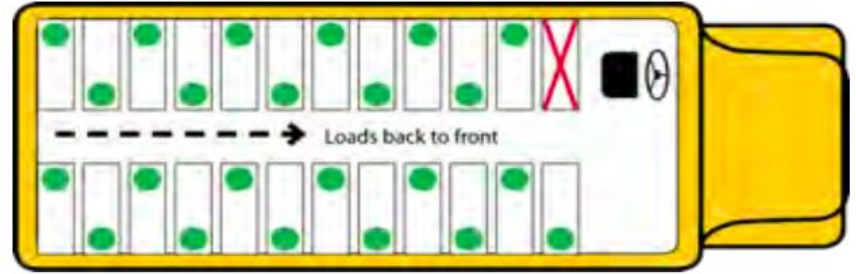
# Schedule for ALL\* students

(\*except Group E  
students)

6th Grade Mon, Tu, Th, Fri	7th Grade Mon, Tu, Th, Fri	8th Grade Mon, Tu, Th, Fri	6th / 7th / 8th Grades Wednesday
Period 1 8:20 a.m. - 9:45 a.m.	Period 1 8:20 a.m. - 9:45 a.m.	Period 1 8:20 a.m. - 9:45 a.m.	Asynchronous Work Time
Period 2 9:50 a.m. - 11:15 a.m.	Period 2 9:50 a.m. - 11:15 a.m.	Period 2 9:50 a.m. - 11:15 a.m.	FLEX/SEL 10:20 a.m. - 10:50 a.m.
			V Sync Support 10:55 a.m. - 11:25 a.m.
Period 3 11:20 a.m. - 1:00 p.m.	Period 3 11:20 a.m. - 12:05 p.m.	Lunch 11:20 p.m. - 11:50 a.m.	Asynchronous Work Time
	Lunch 12:10 p.m. - 12:40 p.m.	Period 3 11:55 a.m. - 1:35 p.m.	
Lunch 1:05 p.m. - 1:35 p.m.	Period 3 (continued) 12:45 p.m. - 1:30 p.m.		
Period 4 1:40 p.m. - 3:05 p.m.	Period 4 1:35 p.m. - 3:05 p.m.	Period 4 1:40 p.m. - 3:05 p.m.	



# Bus Safety

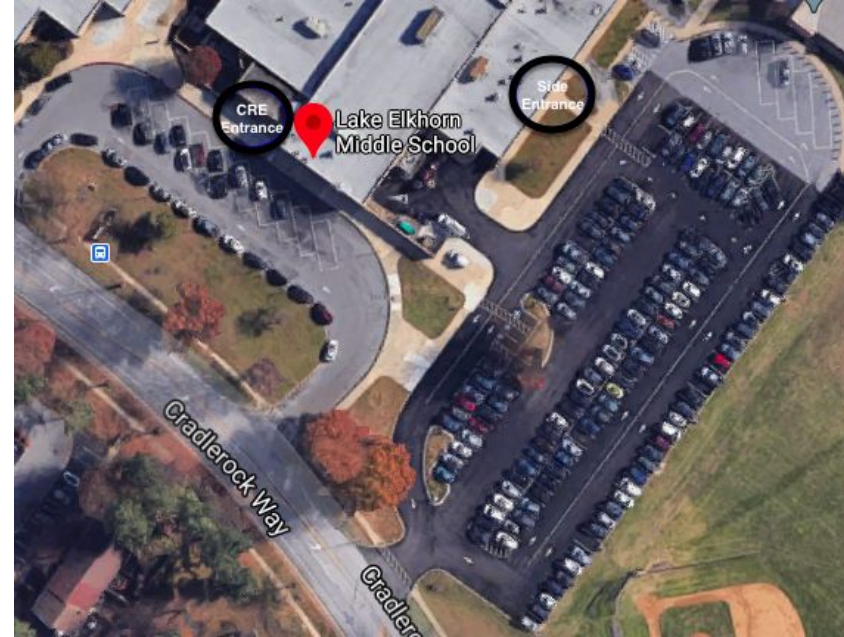


- One student per seat (siblings may ride in the same seat)
- Students will have assigned seats
- While waiting to exit the bus, students will remain seated and not congregate in the aisle
- The adult in charge will dismiss the students one row at a time
- Students will get off the bus safely in a staggered fashion
- After each morning, noon, and afternoon route, the driver will clean high touch areas of the bus
- Students will wear a mask (covering their nose and mouth) and keep their hands to themselves at all times



# Car Riders & Walkers

- Car Riders:
  - Must be dropped off in the car loop and enter through the side Entrance. Doors open at 8:05am.
- Walkers:
  - Can enter the building through the Cradlerock Entrance in front of the building or the side door. Both doors open at 8:05am.



# Arrival

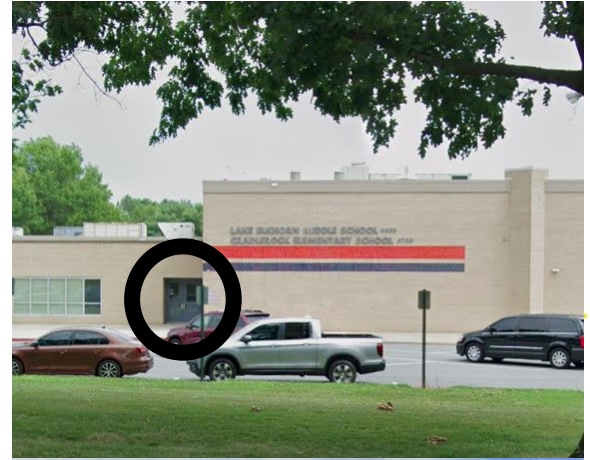
- Students may enter the building starting at 8:05 a.m.
- Students will maintain social distancing: six-feet apart, single file.
- Students will enter the designated Cradlerock/side entrance to enter the cafeteria and pick up their breakfast.
- Students report directly to their first period class and sit in their assigned seat.
  - Students who have science 1st period will eat breakfast in the cafeteria.
- Students do not have lockers.





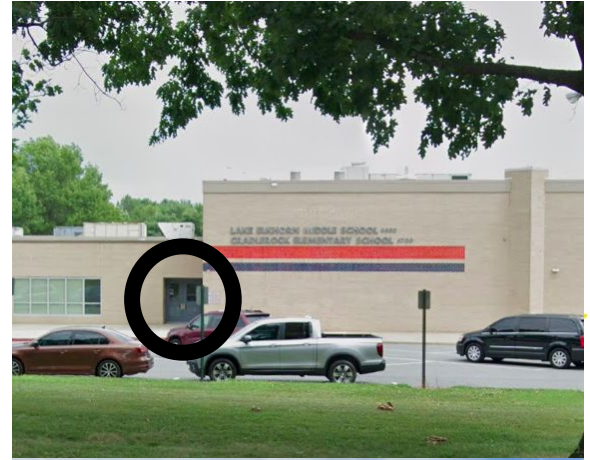
# Breakfast

- In the morning:
  - Bus riders will enter building through the Cradlerock door in the bus loop
  - Car riders will enter the building through the side door in the car loop
  - Walkers may enter the building through the Cradlerock or side door
- **Cradlerock Entrance:** Students will make a right and walk through Cradlerock's cafeteria into LEMS cafeteria.
- **Side Entrance:** Students will enter the LEMS cafeteria using the 2nd entrance



# Breakfast

- Students will grab breakfast and exit LEMS cafeteria by going out the designated exit.
- Students will eat breakfast in Period 1 classrooms.
  - Students who have science 1st period will eat breakfast in the cafeteria.
- When students finish breakfast, they will follow the trash procedures designated by classroom staff.

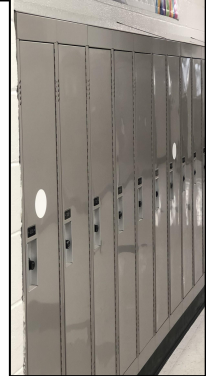
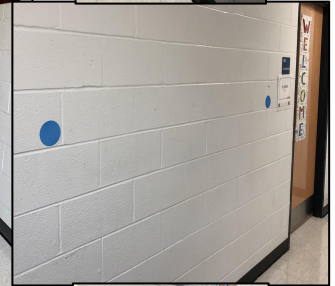
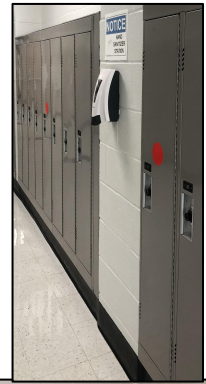


# Hallways

- Hallways are color coded to help with hallway traffic
- The media center will be used as a hallway during period transitions.
- Count the 6 floor tiles to help keep your distance, or use “dots” as a guide
- Hands to Self
- Keep your mask on correctly (covering your nose and mouth).
- Keep to the right; use the gray tiles in the center of the hallway as a guide
- No congregating
- No cell phones or earbuds



Students: You will have time with your teachers to develop an understanding of the safest, quickest route to your next class.



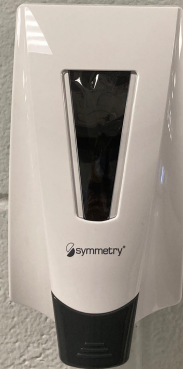
# Other Safety Signs

**STAY RIGHT**



**MAINTAIN SOCIAL  
DISTANCING**

**NOTICE**  
**HAND  
SANITIZER  
STATION**



**FACE MASK  
REQUIRED**



THANK YOU

## Stop the Spread of Germs



**Do not enter if  
you are sick.**



**Wash your hands  
frequently.**



**You must wear a cloth  
face covering over your  
nose and mouth.**



**Do not touch your eyes,  
nose, or mouth.**



**Maintain social distance  
of at least 6-feet.**



**Cover your cough or sneeze with  
a tissue, then throw the tissue in  
the trash and wash your hands.**





# Classrooms

- **Period 1:**

- Do not congregate in the hallway; enter the class immediately as you arrive
- Use hand sanitizer when entering

- **Periods 2, 3, and 4:**

- Line up outside the classroom at marked spots and/or 6 feet apart
- Wait for all students/staff to exit classroom before entering
- Students enter one at a time and go to their assigned seat, wait for that student to sit at their desk, then next student may enter.
- Use hand sanitizer when entering the classroom



# Classrooms

- All desks are spaced 6 feet apart and are facing the same direction.
- Backpacks:
  - Place backpack under desk
  - Do not place on the back of chair
  - or next to desk, so that walkways remain clear
- Students should NOT transfer any materials to built in desk storage, to ensure nothing left behind
- Desks may not be moved; they must remain 6 feet apart
- Students must stay seated. If they need to get up they must raise their hand to ask for permission.
- Students must wait for instructions before being dismissed and/or leaving the classroom

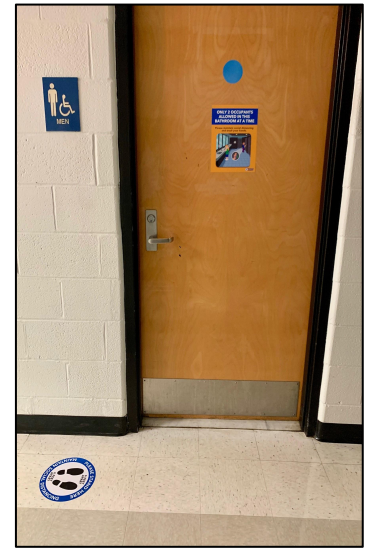


S



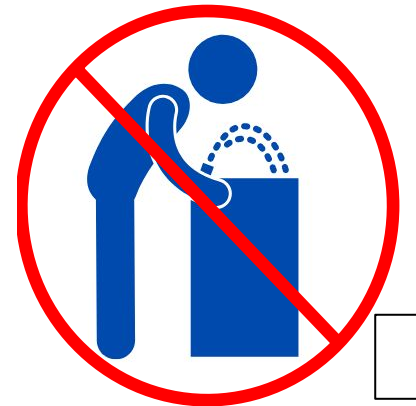
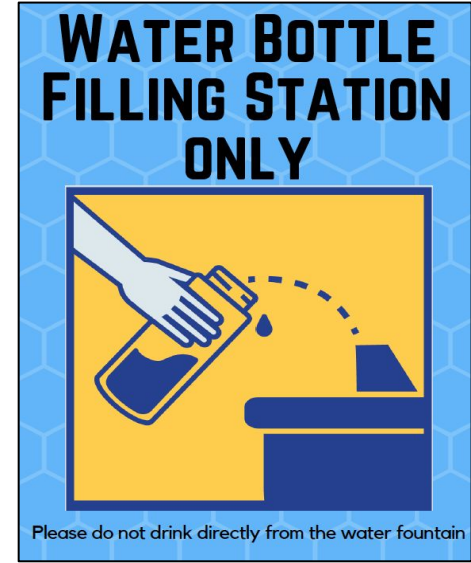
# Bathrooms

- Bathrooms are color coded based on the hallway location. Students are to use the nearest bathroom to their classroom.
- Only two students allowed in the bathroom.
- If the bathroom has two occupants students will wait outside of the bathroom using the decals on the floor as a guide.
- Some toilets and sinks will not be available to ensure social distance is maintained.
- Please do not ask to use the bathroom unless you need to use the bathroom



# Water Fountains

- Water fountains are to be use only for refilling water bottles.
- You are not permitted to drink directly from water fountains.
- Students are to use the water fountain closest to their classroom.
- Maintain social distancing
- Avoid touching your bottle to the water spout





# Lunch



Social distancing floor decals  
for the lunch line



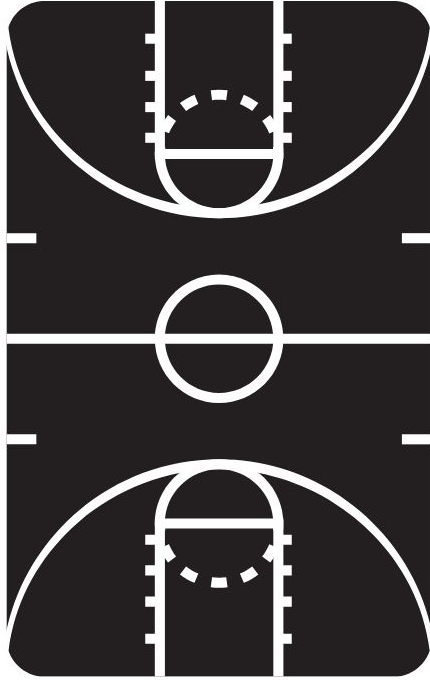
- Students will enter the cafeteria through the first door and sit at their assigned desk.
- Students who pack lunch may begin eating.
- Lead Staff Member will dismiss one row of students at a time to line up for lunch at the first lunch door on left, with masks on, 6 feet apart, and hands to self.
- Students must remain masked unless they are actively eating or drinking. Mask should be put back on during chewing, drinking, and eating

# Lunch



- Students must raise their hands and wait for a staff member to acknowledge them.
- Conversations should be limited, but may be had with the people directly nearest you while wearing your mask.
- **Students should not engage in conversations when their masks are off.**
- Students will wait until the end of lunch to throw away their trash, when prompted to do so.
- When exiting the cafeteria to go to recess, students should remain 6 feet apart and walk in single file lines.
- Students should use hand sanitizer on their way outdoors and when returning to the classroom.

# Recess



**Weather permitting, all students will go outside for recess.**

## **During recess students must:**

- Wear masks, over your mouth and nose, at all times
- Practice social distancing outside
- Remain outside until the end of recess
- Remain on blacktop or grassy areas as directed by staff.

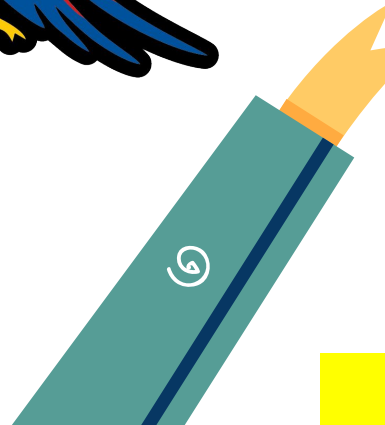
## **When re-entering school, students must:**

- Re-enter through the designated door at and report immediately to their next period.
- Remain 6 feet apart and walk in single file lines
- Use hand sanitizer

# Dismissal

- Afternoon announcements come on at 3:00 p.m.
- Bus riders will be dismissed first:
  - There will be an announcement for each bus as it arrives.
  - Students will report immediately to their bus once it is announced.
- Walkers and car riders will be dismissed after all busses have been called and dismissed by their color coded hallway by an announcement.
- Walkers should exit the building from the exit closest to their classroom, but not from the main entrance/front doors.







## Health Room



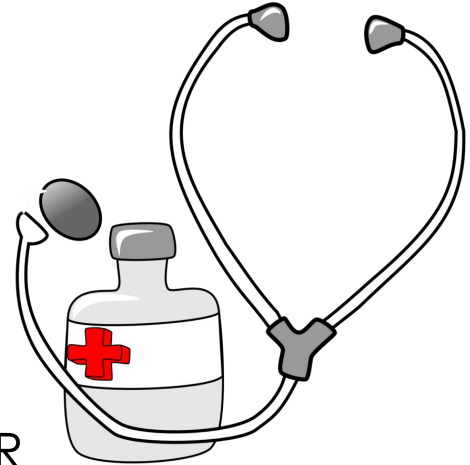
- If a student needs to go to the health room, a staff member will call the Nurse to explain student symptoms and determine if the student can be sent right away.
- If the health room is full, the Nurse will give appointments in an act to triage students.
- There are specific procedures for students who have daily and non-daily medications. The school nurse will ensure those who require medication are fully aware of the procedures.



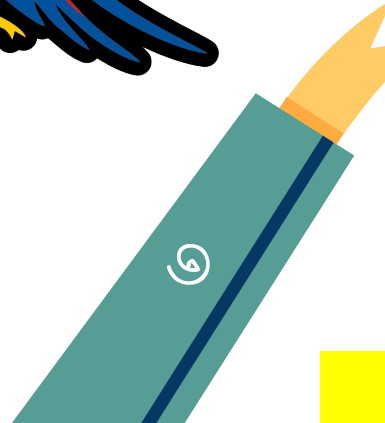
## Health Room



- Students must:
  - Have permission to come to the Health Room from their teacher
  - Bring their belongings
  - Wear a mask properly
  - Knock on HR door before entering
  - Stay 6 feet apart from other students in HR
  - Wash their hands before leaving



# Other Procedures





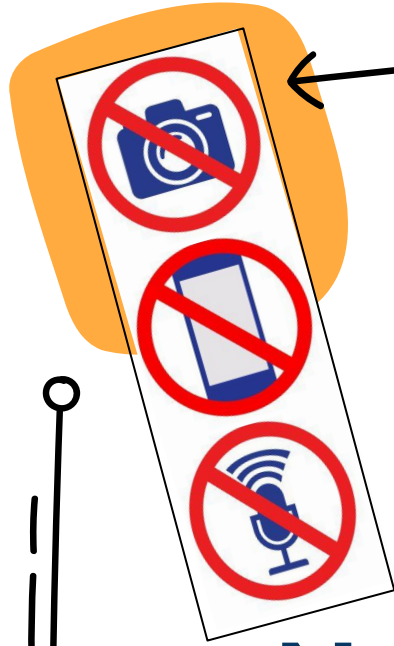


# CELL PHONES

and earbuds/airpods/headphones

**OFF** (or silent)  
**& away in:**

- Hallways
- Classrooms
- Bathrooms
- Offices
- All areas of the school  
except the cafeteria  
(one earbud permitted  
during lunch/recess)



# **CELL PHONES**

**No Photos**

**No Videos**

**No Audio Recordings**

# Student Services: During In-Person Learning

Student services is unable to take student “walk-ins” at this time.

However, if a student needs to see their school counselor or go to the Student Services office, they can:

- Ask a teacher or staff member to call to arrange for the student to be seen right away (for situations that are more urgent in nature)
- Contact their counselor to make an appointment:
  - Send us a message on Canvas or via email
  - Fill out the online form:

<https://tinyurl.com/lemsstudentservices>

# Student Services: After School Hours

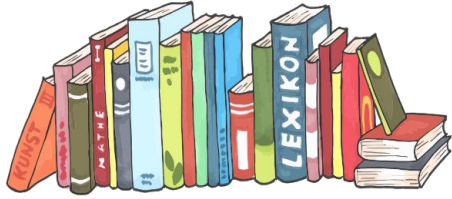
If a student needs help **after school hours**, what can they do?

- If it's not an urgent need, students can contact their counselor, who should be able to respond by the next school day.
- If it is an urgent need for help with depression, suicidal thoughts, or other serious mental health issues, please contact:
  - Grassroots Crisis Intervention at 410-531-6677
  - The Maryland Crisis Hotline: Dial 211 and then choose option 1
  - The Crisis Text Line: Text 741741 and a trained counselor will respond
  - The National Suicide Prevention Hotline at 1-800-273-8255

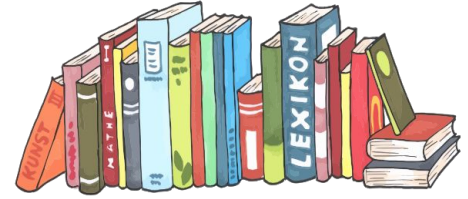
# Student Services: On Virtual Learning Days

If a student needs help **during virtual learning days**, what can they do?

- Join virtual office hours:
  - Use google meet code: **LEMS-StudentServices**
  - If this Google Meet is not open or the away message is showing, please choose another scheduling option
- Refer to the information on the prior slide, regarding after-hours procedures



# Media Center



- The media center will only be used when supervised by a teacher/staff member.
- Students will use a Google Form to request/check-out books.
- Students can return Media books at the end of the day to a designated cart outside of the Media Center.
- During class transition, the Media Center will be used as a hallway. during class time, students should not cut through the media center



## Band, Orchestra, Chorus



- Students will wear masks when singing/playing.
- Students will remain socially distanced.
- Students may play their instruments; they:
  - Must play in a space that is separate from rest of the group, monitored by an adult
  - Should wipe down their instrument and music stand after playing using the disinfectant wipes provided by the school
  - Should wash hands or use hand sanitizer before returning to their next class



## Band, Orchestra, Chorus

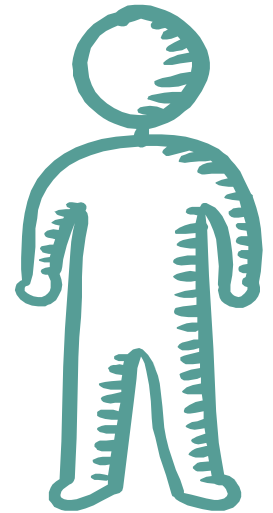


- Wind instrumental students:
  - Should wear masks with slits for their mouths when playing, provided by the Music Office.
  - Will use instrument bags and bell covers as needed, provided by the Music Office.
  - Outside of active playing time, regular masks which fully cover the nose and mouth must be worn.



# Visitors

- No parents or guardians are allowed near the front of the school.
- If picking up a student for early dismissal, please call the school to let the staff know you have arrived.
- Parents should stay in their cars or more than 6 feet away from all students and staff when dropping off/picking up students.
- Parents will need to show ID through the window.
- Limited, essential visitors are able to enter LEMS by previous appointment only, if approved by an administrator



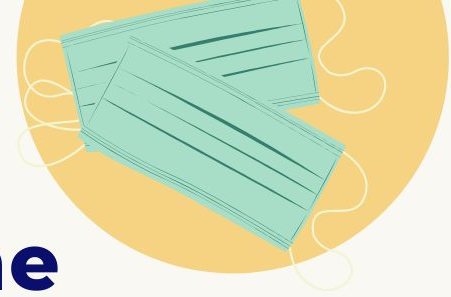
# General Safety Reminders & Guidelines



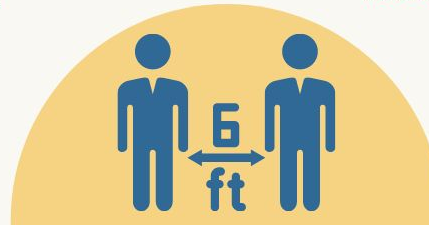
**#StopTheSpread**

# 8 Steps to prevent the spread of COVID-19

Source: World Health Organization

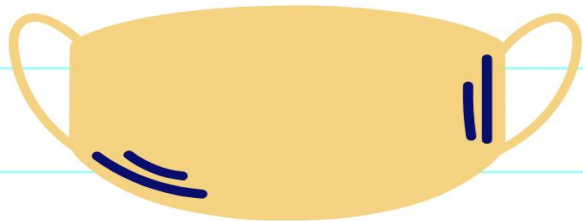


- 01** Wash your hands frequently
- 02** Avoid touching your eyes, nose, and mouth
- 03** Cover your mouth when you cough using a tissue or the bend of your elbow
- 04** Avoid crowded places and close contact with anyone who has fever or cough
- 05** Stay 6 feet (2 meets) apart
- 06** Stay home if you feel unwell
- 07** Seek medical care early if you have a fever, coughs, and difficulty breathing—but call first
- 08** Get information from trusted sources



# FABRIC MASKS:

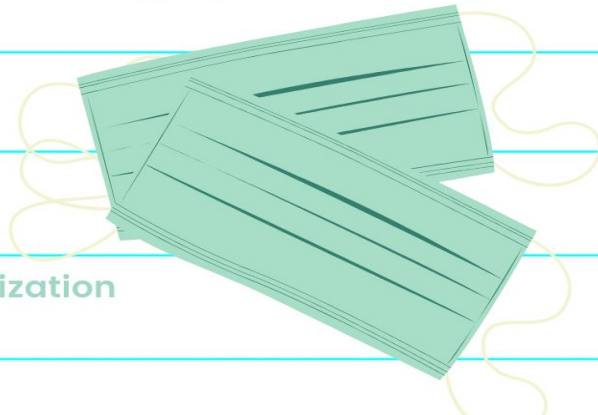
- Thoroughly wash hands with soap and water before touching the mask
- Inspect the mask for any damages or dirt
- Adjust the mask without leaving gaps on the side
- Cover your mouth, nose, and chin
- Avoid touching the mask
- Clean your hands before removing the mask
- Use the straps to remove the mask and pull it away from your face
- Store the mask in the clean resealable plastic bag if it is not dirty or wet, and you plan to re-use it
- Remove the mask from the bag by the straps
- Wash the mask with soap or detergent, preferably with hot water, at least once a day
- Clean your hands after removing the mask



**SOURCE: WORLD HEALTH ORGANIZATION**

# MEDICAL MASK:

- Thoroughly wash hands with soap and water before touching the mask
- Find the top side where the metal piece or stiff edge is
- Check the mask for any tears or holes
- Avoid touching the mask
- Cover your mouth, nose, and chin.
- Use the straps to remove the mask
- Keep the mask away from you or any surface when removing it
- Wash your hands after
- Ensure that the colored side faces outwards
- Place the metal piece/stiff edge over your nose
- Adjust the mask without leaving gaps on the side



Source: World Health Organization



## DO choose masks that



Have two or more layers of washable, breathable fabric



Completely cover your nose and mouth



Fit snugly against the sides of your face and don't have gaps



Have a nose wire to prevent air from leaking out of the top of the mask

## DO NOT choose masks that



Are made of fabric that makes it hard to breathe, for example, vinyl



Have exhalation valves or vents which allow virus particles to escape

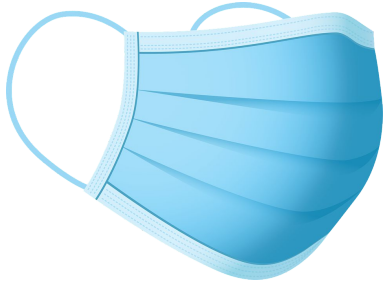


Are intended for healthcare workers, including N95 respirators

~ From the CDC Source:

<https://www.cdc.gov/coronavirus/2019-ncov/prevent-getting-sick/about-face-coverings.html>

## Acceptable Masks



## Unacceptable Masks



Gaiters are not permitted unless you have a 3-ply mask underneath.



Any mask with a vent is not permitted unless you have 3-ply mask underneath.

# Additional Resources

[HCPSS Help Page](#)

[Bridge to Hybrid Learning Manual](#)

[Student/Family FAQ](#)

[LEMS Website](#)



## Stop the Spread of Germs

	<b>Do not enter if you are sick.</b>
	<b>Wash your hands frequently.</b>
	<b>You must wear a cloth face covering over your nose and mouth.</b>
	<b>Do not touch your eyes, nose, or mouth.</b>
	<b>Maintain social distance of at least 6-feet.</b>
	<b>Cover your cough or sneeze with a tissue, then throw the tissue in the trash and wash your hands.</b>



# Upcoming Dates

- **Lunch bunches for Groups A & B:**
  - **6th grade:** March 24, 11:30 am
  - **7th & 8th grade:** April 7, 11:30 am
- **Student Orientations:**
  - **6A:** March 29, 9:00 am
  - **6B:** April 1, 9:00 am
  - **7A & 8A:** April 12, 9:00 am
  - **7B & 8B:** April 15, 9:00 am

*There will also be “opening week” lessons to help kids acclimate, and building tours for new students*



## Stop the Spread of Germs

	<b>Do not enter if you are sick.</b>
	<b>Wash your hands frequently.</b>
	<b>You must wear a cloth face covering over your nose and mouth.</b>
	<b>Do not touch your eyes, nose, or mouth.</b>
	<b>Maintain social distance of at least 6-feet.</b>
	<b>Cover your cough or sneeze with a tissue, then throw the tissue in the trash and wash your hands.</b>

# Thank You!



## Stop the Spread of Germs



**Do not enter if you are sick.**



**Wash your hands frequently.**



**You must wear a cloth face covering over your nose and mouth.**



**Do not touch your eyes, nose, or mouth.**



**Maintain social distance of at least 6-feet.**



**Cover your cough or sneeze with a tissue, then throw the tissue in the trash and wash your hands.**