

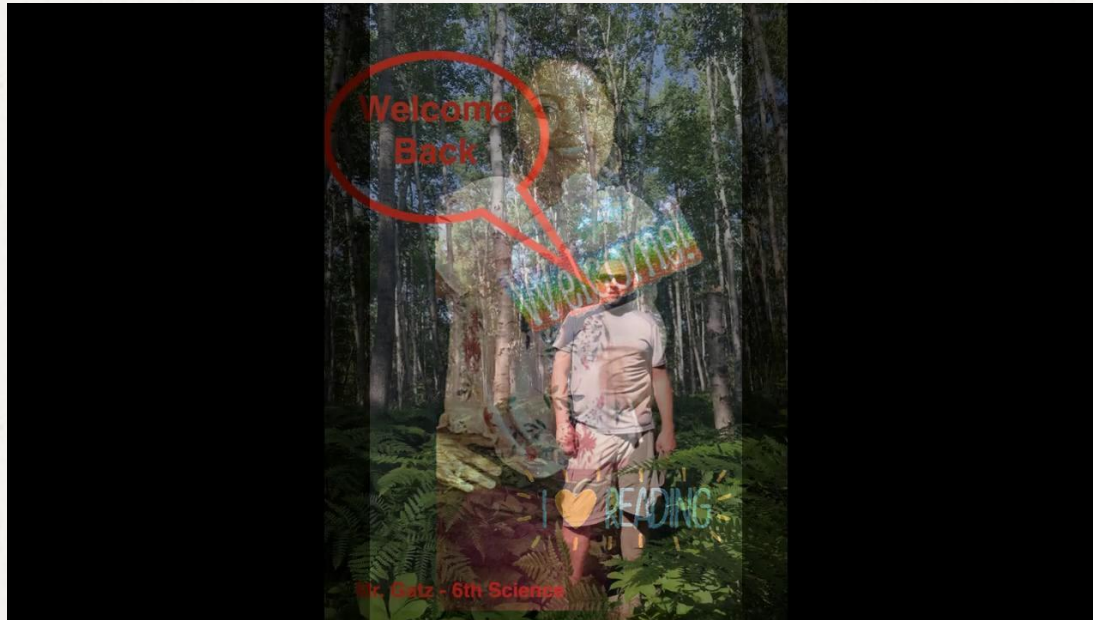
Welcome!

Lake Elkhorn Middle School
New Student Orientation 2020-21



Please mute your microphone to ensure the best experience for everyone. Thank you!

Welcome to Lake Elkhorn Middle School!

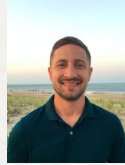


LEMS Administrative Team

Melissa Shindel, Principal



Nick Cometa, 6th Grade Administrator



Jacqueline Sica, 7th Grade Administrator



Kamille Guinn, 8th Grade Administrator



LEMS Student Services

- Bettina OliverMcCain
 - 6th grade
 - 7th grade, last names A-K
- Julie Fischer
 - 7th grade, last names L-Z
 - 8th grade



LEMS Team Leaders

- 6th grade team leader – Ms. Buser
- 7th grade team leader – Ms. Everett
- 8th grade team leader - Ms. Lowman
- Related Arts team leader - Mr. Bond

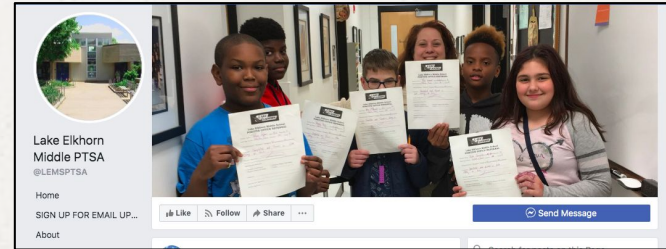


PTSA & Getting Involved

- We need you! Stay involved!
- PTSA:
 - Membership drive coming soon!

- <https://www.facebook.com/LEMSPTSA/>

- <https://www.lems-ptsa.org/>



HCPSS Connect



Provides single sign-on access to student information & classroom instructional tools:

PARENT ACCESS TO STUDENT INFORMATION & CLASSWORK



HCPSS Connect

HCPSS Connect provides access to a variety of student information and classroom instructional tools offering personalized communication and timely, relevant and easily accessible information relating to your student.

 HCPSS CONNECT LOGIN

- **Family File - Completed online - no more paper Emergency Cards - must be updated each year!**
- Visit <http://www.hcpss.org/connect/> to update or for ways to get help with your username or password



HCPSS Connect



Provides single sign-on access to student information & classroom instructional tools:

PARENT ACCESS TO STUDENT INFORMATION & CLASSWORK



HCPSS Connect

HCPSS Connect provides access to a variety of student information and classroom instructional tools offering personalized communication and timely, relevant and easily accessible information relating to your student.

[HCPSS CONNECT LOGIN](#)

- **Synergy** – Student records, attendance & grades. Update medical and emergency contact information each year.
- **Canvas** - Access to class information, calendar & assignments
- **School Messenger** - All parents are automatically subscribed to our school as students enroll. Everyone should have received several communications by now.

4x4 Student Schedule

Monday	Tuesday	Wednesday	Thursday	Friday
Period 1 Additional Synchronous Support 8:30 - 8:50	Period 2 Additional Synchronous Support 8:30 - 8:50	Asynchronous Work Time/ Student Supports 8:30-3:15	Period 1 Additional Synchronous Support 8:30 - 8:50	Period 2 Additional Synchronous Support 8:30 - 8:50
Period 1 - Synchronous Class 9:00 - 9:45	Period 1 - Synchronous Class 9:00 - 9:45		Period 1 - Synchronous Class 9:00 - 9:45	Period 1 - Synchronous Class 9:00 - 9:45
Period 2 - Synchronous Class 10:00 - 10:45	Period 2 - Synchronous Class 10:00 - 10:45		Period 2 - Synchronous Class 10:00 - 10:45	Period 2 - Synchronous Class 10:00 - 10:45
Synchronous Flex Time/SEL 10:50 - 11:20	Lunch/ Asynchronous Work Time/Student Supports 10:45-1:10		Lunch/ Asynchronous Work Time/Student Supports 10:45-1:10	Lunch/ Asynchronous Work Time/Student Supports 10:45-1:10
Lunch/ Asynchronous Work Time/Student Supports 11:20-1:10				

	Synchronous Class
	Synchronous Support Period
	Asynchronous Work Time / Student Supports / Sectionals / GT Seminars



Monday	Tuesday	Wednesday	Thursday	Friday
Period 3 - Synchronous Class 1:10 - 1:55	Period 3 - Synchronous Class 1:10 - 1:55	Asynchronous Work Time/ Student Supports 8:30-3:15	Period 3 - Synchronous Class 1:10 - 1:55	Period 3 - Synchronous Class 1:10 - 1:55
Period 4 - Synchronous Class 2:10 - 2:55	Period 4 - Synchronous Class 2:10 - 2:55		Period 4 - Synchronous Class 2:10 - 2:55	Period 4 - Synchronous Class 2:10 - 2:55
Period 3 Additional Synchronous Support 2:55 - 3:15	Period 4 Additional Synchronous Support 2:55 - 3:15		Period 3 Additional Synchronous Support 2:55 - 3:15	Period 4 Additional Synchronous Support 2:55 - 3:15

4x4 Student Schedule

	Synchronous Class
	Synchronous Support Period
	Asynchronous Work Time / Student Supports / Sectionals / GT Seminars

Visit our website for a 4x4
Virtual Student Schedule that your
child can use as an organizer!



General Parameters of the 4x4

- Students have 8 periods: 4 in the fall and 4 in the spring
- Typical year-long classes will occur over a semester
- All students will take ELA, math, science, social studies, PE, health and at least one fine arts class
- Related Arts (R/A) classes will remain quarterly
- 2 R/A classes will make up
1 period each semester
(quarterly classes = 1 semester period)



General Parameters of the 4x4

- Students will get a random sampling of art, general music, Family and Consumer Science, and Tech Ed.
All 6th graders will take a careers class
- A Social and Emotional Learning (SEL) block will occur each week on Mondays
- G/T Seminars and band / orchestra sectionals will not be pull-outs this year



General Parameters of the 4x4

- New courses being offered year:
 - 21st century learning
 - Academic seminar
- Modifications to existing courses:
 - Reader's Cafe (as a stand alone course)
 - Writer's Cafe (as a stand alone course)
 - Boost the Brain (as a stand alone course)
 - Digital Citizenship (in 6th grade)



PBIS at LEMS

At Lake Eikhorn
we have

PRIDE!



Free and Reduced Meals

- HCPSS participates in the National School Lunch and Breakfast Programs which provide families with significant benefits to help save money.
- Qualification is based on family size and income, and enrollment is confidential.
- ***Families must submit a new application every school year:***
<https://www.hcpss.org/food-services/farms/>
- 1st semester - all kids will be able to get free meals

Free and Reduced Meals During Virtual Learning

Meals will be provided at **no cost to all students** through December 31, 2020, subject to U.S. Department of Agriculture funding availability.

Grab-and-Go meals start Tuesday, September 8, 2020.

- Monday through Friday from 8–9 a.m. and 10:45 a.m.–12:45 p.m.
- Breakfast and lunch can be picked up at either meal time.
- Lake Elkhorn is a meal site





Social Media

1. Please monitor your child's social media
2. We strongly encourage
 - a. Requiring strict privacy settings
 - b. Setting time limits
 - c. Removing phones overnight
 - d. Having conversations about use during school
3. Oftentimes an age requirement of 13
4. Texts, posts, emails & apps - Trust but verify
5. Cautions:
 - a. Bullying takes place over the Internet (cyberbullying policy)
 - b. Drama increases / friendships struggle



What Can We Do If We Suspect Bullying/Cyberbullying?

How Can We Report?

- **Online:**
 - https://www.hcpss.org/f/parents/form_harassment.pdf
 - <http://report.sprigeo.com>
- **Contact Us**



School Messages / Communication

- LEMS Newsletter - Every other week on Friday
- PTSA Newsletter - Every other week, opposite school newsletters
- Website - Updated regularly (lems.hcpss.org)
- LEMS Twitter - www.twitter.com/hcpss_lems
- Principal's Instagram - [@principal_shindel](https://www.instagram.com/principal_shindel)



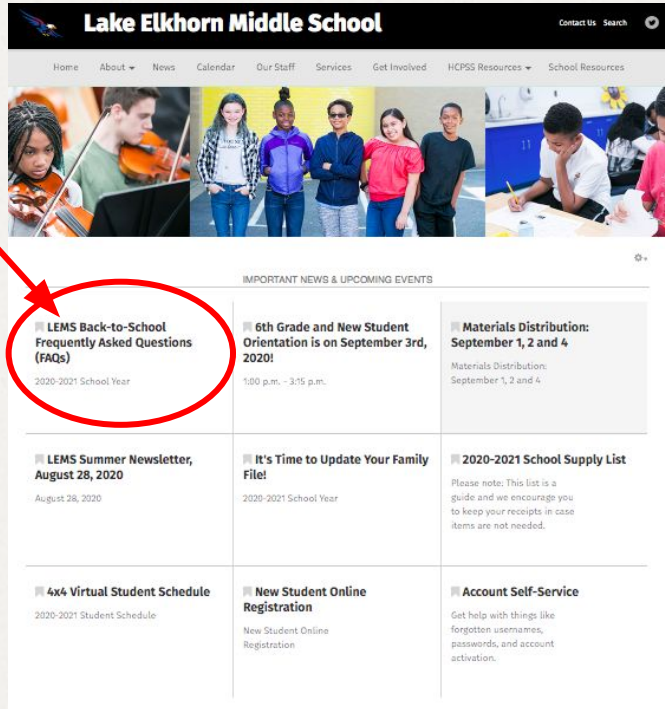
Contacting Teachers

- Email - Use website directory
- Contact through Canvas

*Please allow 24-48 hours for a response during the week
(Most responses will be sooner than that)*



FAQs



Lake Elkhorn Middle School Contact Us Search

Home About News Calendar Our Staff Services Get Involved HCPSS Resources School Resources

IMPORTANT NEWS & UPCOMING EVENTS

LEMS Back-to-School Frequently Asked Questions (FAQs) 2020-2021 School Year	6th Grade and New Student Orientation is on September 3rd, 2020! 1:00 p.m. - 3:15 p.m.	Materials Distribution: September 1, 2 and 4 Materials Distribution: September 1, 2 and 4
LEMS Summer Newsletter, August 28, 2020 August 28, 2020	It's Time to Update Your Family File! 2020-2021 School Year	2020-2021 School Supply List Please note: This list is a guide and we encourage you to keep your receipts in case items are not needed.
4x4 Virtual Student Schedule 2020-2021 Student Schedule	New Student Online Registration New Student Online Registration	Account Self-Service Registration Get help with things like forgotten usernames, passwords, and account activation.

Have questions about the virtual learning model?
Be sure check out our FAQs page.

Let us know if you have more questions and we will add them to this link!



**We Thank You for Visiting With Us Today!
Come Back Soon!**

